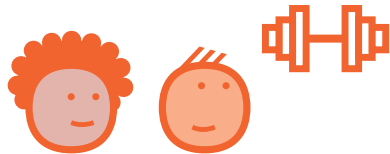


# Hoe werkt FamilieKracht?



Ontwikkeling werkwijze & team



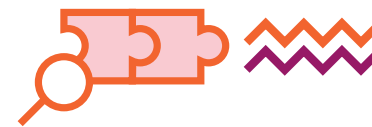
Focus op kracht



Wijkgericht outreachend



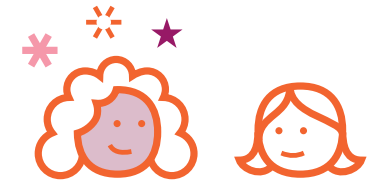
Netwerk vergroten



Analyse samenhang problemen & stress



Gezamenlijke besluitvorming



GGZ-behandeling

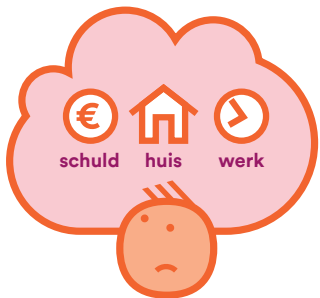


Maatwerk

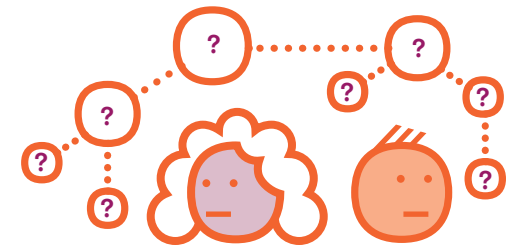
# FamilieKracht voor gezinnen met multi-stress



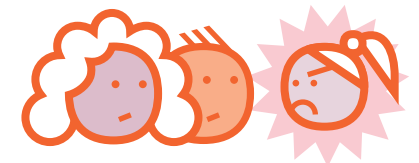
Psychiatrie  
ouder



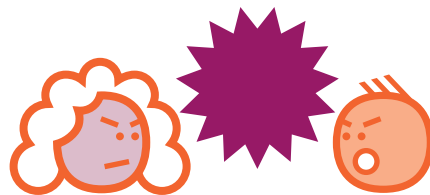
Bestaans-  
onzekerheid



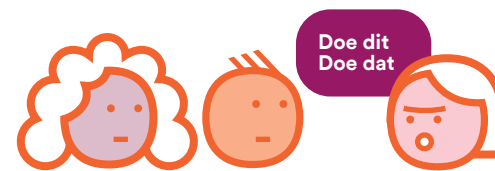
Weinig netwerk  
& steun



Gedragsproblemen  
kind & opvoed-  
problemen



Relatieproblemen en  
huiselijk geweld



Slechte ervaring met  
eerdere hulpverleners